

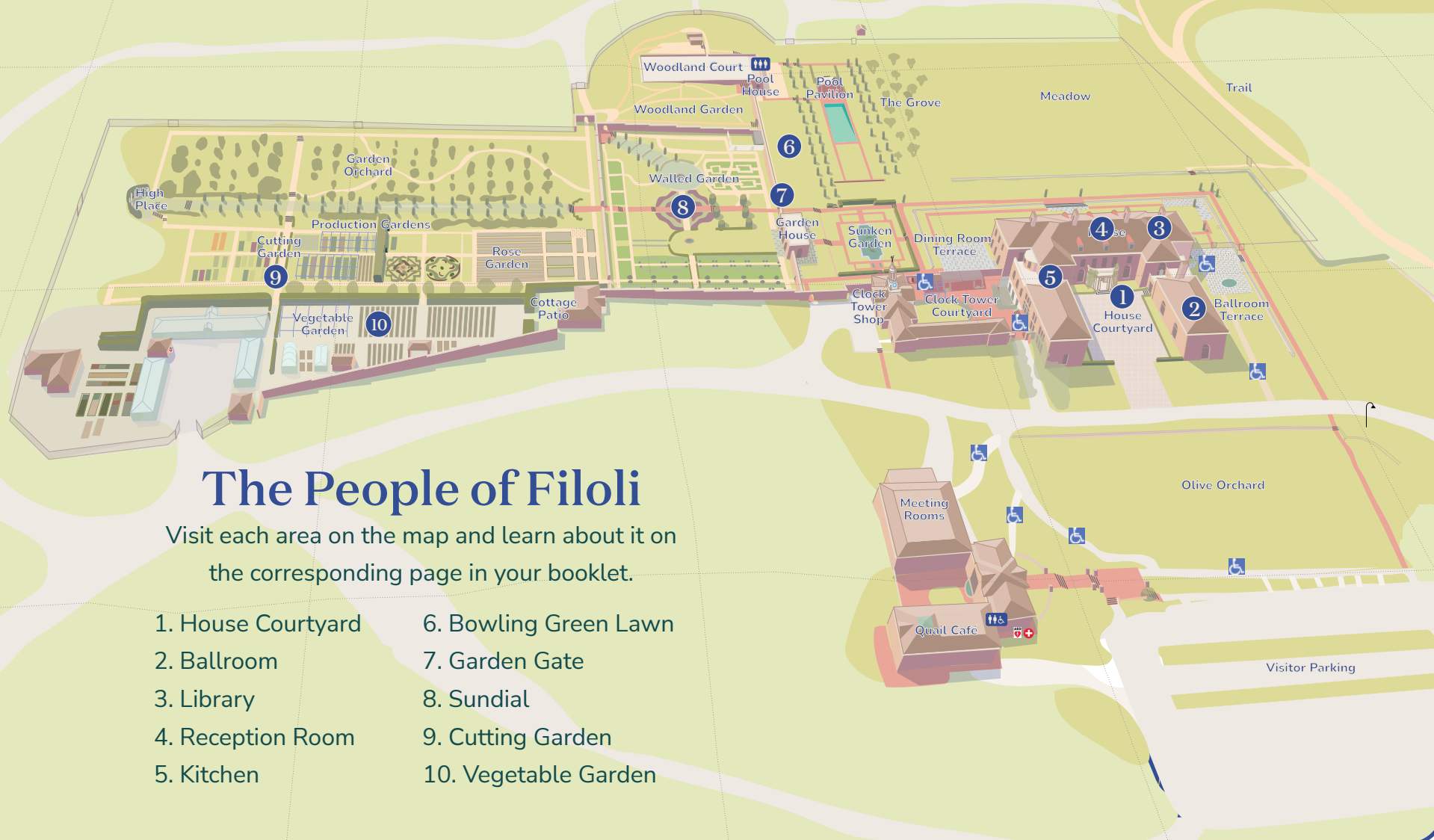


## The People of Filoli

---

Welcome to Filoli! Today you'll explore the House and Garden, and learn about the people who designed, cared for, and lived here.

# filoli



## The People of Filoli

Visit each area on the map and learn about it on the corresponding page in your booklet.

- |                    |                       |
|--------------------|-----------------------|
| 1. House Courtyard | 6. Bowling Green Lawn |
| 2. Ballroom        | 7. Garden Gate        |
| 3. Library         | 8. Sundial            |
| 4. Reception Room  | 9. Cutting Garden     |
| 5. Kitchen         | 10. Vegetable Garden  |



# Willis Polk, House Courtyard, 1939

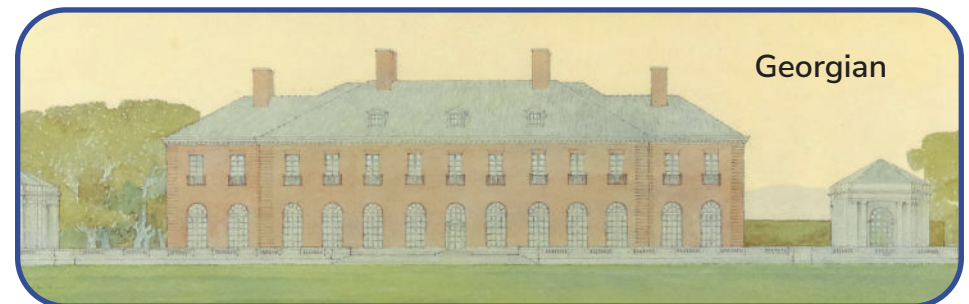
Willis Polk was the architect who designed the House. Before it was built, he came up with many ideas to show Mr. and Mrs. Bourn. These ideas are called concept drawings.

Which concept did the Bourns choose for Filoli?

---

Mr. Polk designed Filoli with:

- 56 Rooms
- 17 Fire places
- 15 Bathrooms
- 10 Family bedrooms
- 14 Staff bedrooms



## The Roth Twins, Ballroom, 1939

When twins Lurline and Berenice Roth turned 19 years old in 1939 their parents held an extravagant party. Their mother, Mrs. Roth, walked them into the party of hundreds of people. Big Band music played in the ballroom all evening.



What type of music do you listen to?

\_\_\_\_\_

Musician or Singer? \_\_\_\_\_

Favorite Song? \_\_\_\_\_

How do you listen to music? \_\_\_\_\_

Ask your teacher or an adult at home to tell you about the music they listened to as a teenager.



What type of music do they listen to?

\_\_\_\_\_

Musician or Singer? \_\_\_\_\_

Favorite Song? \_\_\_\_\_

How did they listen to music? \_\_\_\_\_



## 3

## Mrs. Bourn, Library, 1960

Agnes Bourn and her husband William Bourn built Filoli in 1917. They lived here until 1936.

Mrs. Bourn would sit at a desk in this room, the Library, and write checks to pay the 35 house and garden staff. She also wrote checks for food, supplies, livestock, and vehicles.

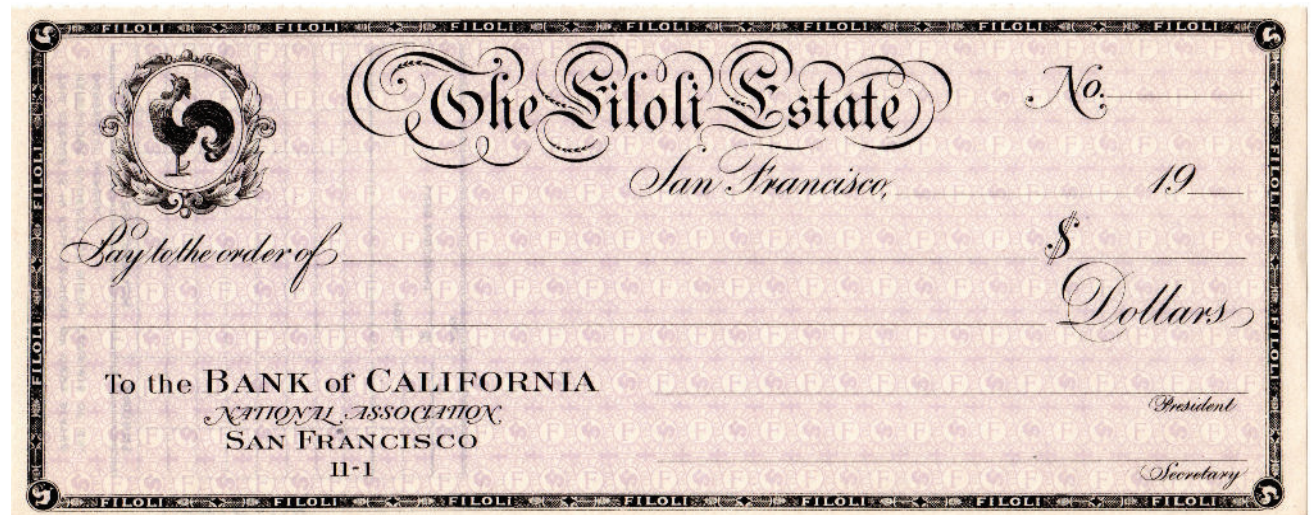


### Activity

1. Find the portrait of Mrs. Bourn.
2. Have an adult show you how to write a check for a 1925 farm truck. You are the "President" of the Estate. Make the check out to "Ford Motor Company."

### Prices, Then and Now

Gallon of milk	One sheep
1925: \$0.14	1925: \$9
Today: \$5	Today: \$200
Loaf of bread	Farm pickup truck
1925: \$0.10	1925: \$300
Today: \$5	Today: \$40,000





## 4

## Teikichi Taga, Reception Room, 1960

Both families that lived at Filoli enjoyed plants and fresh flowers in the House. Filoli continues that tradition today. How many plants and flower arrangements to you see in this room today?

---

Teikichi Taga was born in Japan and moved to San Francisco in 1906. He worked for the Roth family for more than 40 years. In this photo he is placing flowers in the grand Reception Room of the House.

As one of the butlers, he worked with the house staff including lady's maids, cooks, and chauffeurs. Many of the staff lived in the House.

Though Mr. Taga's job was to care for the Roth family and their home, he also had his own family and was a father and husband.



## 5

## Kee Low, Kitchen, 1960

Kee Low was the chef for the Roth family for 50 years. Chef Low had a talent for duplicating dishes from the Roth family's international travels, from tamales to curry chicken. Though census records mark Kee's birthplace as California, his descendants state that he emigrated from China. Look for the census records here in the Kitchen.



### Activity

What are these antique kitchen tools used for? Look at their modern equivalent for a hint.

Use: \_\_\_\_\_



Use: \_\_\_\_\_



Use: \_\_\_\_\_





## Rosie and Billy Vincent, Bowling Green Lawn, 1921



Rosie and Billy Vincent were Mr. and Mrs. Bourn's grandchildren. They traveled from their home in Ireland to spend summers at Filoli.

Today, it would take you 10 hours to fly from Ireland to the San Francisco airport, and another 30 minutes to drive to Filoli.

In 1921, travel from Ireland would take two weeks. The children's journey included a week on an ocean liner across the Atlantic Ocean to New York and a week on a train from New York to San Francisco.

This area was used by the Bourns for playing games. What outdoor games do you play with your family or friends?

---

---

---





## Garden Gate, William Bourn, 1917

Mr. Bourn named Filoli for his own personal motto:

*Fight for a just cause.*

*Love your fellow man.*

*Live a good life.*



### Activity

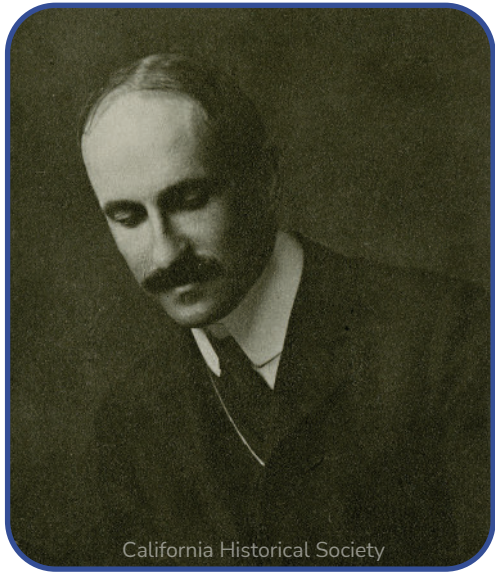
1. Find the crest above the gate to the Walled Garden.
2. Choose the three most important words to you. Write them on your crest.





8

## Sundial, Bruce Porter, 1917



### Activity

Look for the sundial made by Bruce Porter. He was the Garden designer and he also made objects in the Garden.

What does a sundial tell?

---





## Cutting Garden, Bella Worn, 1940



Isabella “Bella” Worn was a plant designer and brought plants from all over the world for the Bourns and Roths. She helped create the Cutting Garden that is still used today by Filoli staff to make floral arrangements in the House.



### Activity

Look for the cage in the Cutting Garden that protects flowers and berries from being eaten by garden animals. It's okay to go inside!



# 10 Vegetable Garden, Filoli Gardeners, Present Day

Filoli's Gardeners care for this Vegetable Garden, which was originally planted in the 1920s to provide fresh vegetables for the family and their guests.

The Gardeners now grow vegetables and herbs from around the world, used by many cultures: Asian longbeans, Thai chilis, and zesty tomatillos.

Find vegetables you recognize, and list a few you have eaten recently

1.

---

2.

---

3.

---

