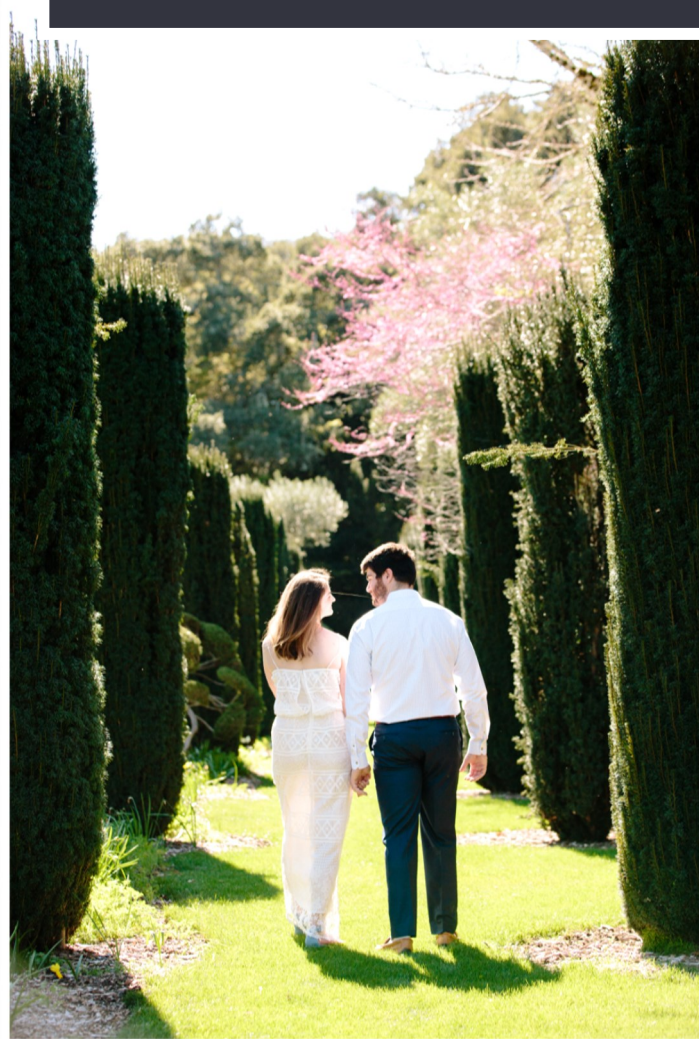




# Weddings at *F*ILOLI®



Conveniently located between San Francisco and Silicon Valley, Filoli is recognized as one of the finest remaining country estates of the early 20th century.

With over 16 acres of formal gardens, a one-of-a-kind grand Ballroom, and nine dynamic event spaces, Filoli is the idyllic setting for weddings and celebrations.





# Outdoor Event Spaces



## Entry Courtyard

The Entry Courtyard is an ideal evening event space for dramatic ceremonies, outdoor dinners, or cocktail receptions followed by dinner in the Ballroom.

**Capacity:** 220 seated or 300 standing



## Garden House

Overlooking the beautiful sunken and walled gardens, French doors impart an open, airy feel while providing wonderful views of the garden.

**Capacity of House:** 30 seated or 50 standing

**Capacity of Garden House Lawn:** 200 seated on rounds, 240 theater style, or 260 standing



## Dining Room Terrace

Located on the south side of the historic house, this terrace has a large tree at its center. This is a lovely space for festive cocktail parties or intimate dinners.

**Capacity:** 80 seated or 150 standing



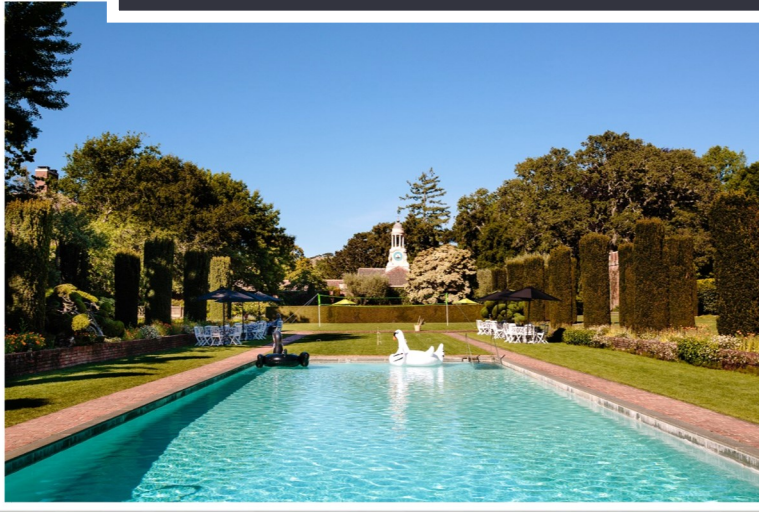
## Woodland Garden Court

Framed by stately coast live oaks, this space features a built in stage and overlooks the pool and woodland garden. Ideal for dinners and receptions with dancing.

**Capacity:** 600 seated or 1,000 standing



# Outdoor Event Spaces



## Pool

With crystal blue waters, the expansive pool is surrounded by pristine lawns. This space is ideal for cocktail hours, dinners, or dancing under the pavilion.

**Capacity:** 140 seated or 220 standing



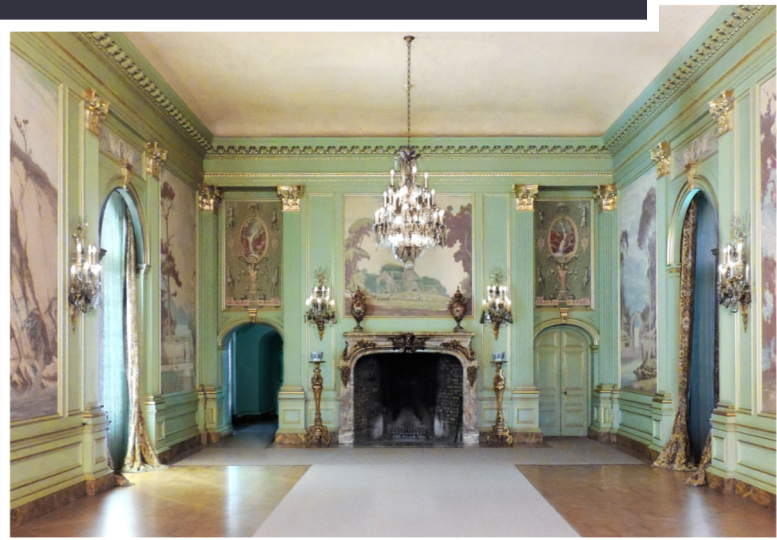
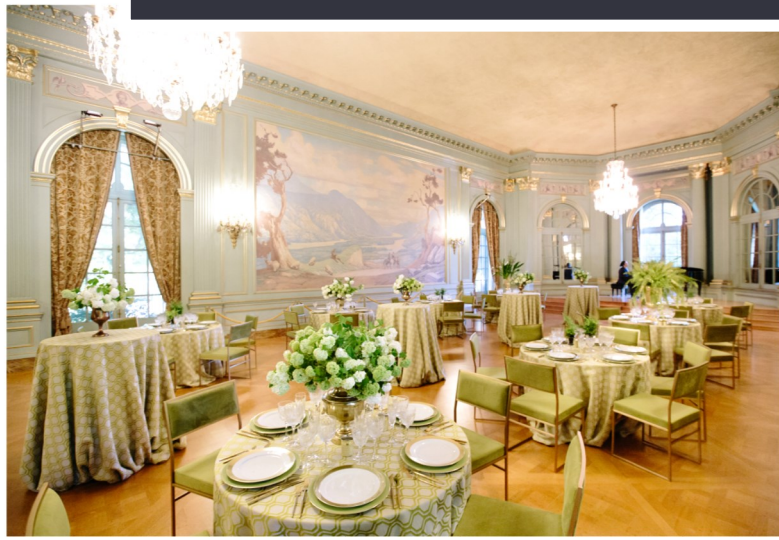
## Upper or Lower West Lawns

The formal lawns on the west side of the home were designed with low profile plantings to showcase the magnificent view of the redwood foothills to the west. Perfect for large scale dinners or cocktail receptions.

**Capacity:** 400 seated or 600 standing



# Indoor Event Spaces



## Ballroom

With over 22-foot ceilings, the Ballroom is Filoli's Gem. The walls are a lovely water-green color with gold leaf details. The magnificent crystal chandeliers, which are copies of those that hung in the Hall of Mirrors at Versailles, and six elaborate crystal wall sconces with amethyst colored crystal drops, complete the grand illumination of the ballroom. A built-in stage and grand piano offer the ideal space for live entertainment.

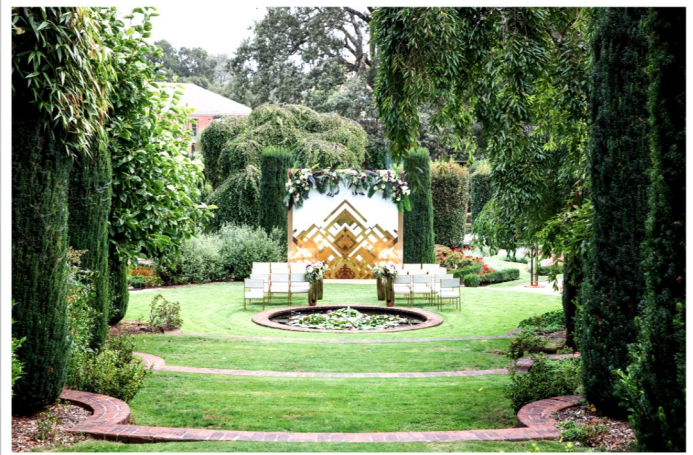
**Capacity:** 120 seated at rounds, 145 theater, or 200 standing



## The Quail's Nest Café

Nestled in the woodland and native garden at Filoli, the beautiful conservatory-style Quail's Nest Café offers a peaceful setting with memorable cuisine by Crystal Springs Catering.

**Capacity:** 60 seated, 90 standing





# Wedding Packages

*Proceeds from your event support Filoli's mission, from the care of the historic House, magnificent Gardens, and vast Nature Preserve, to the events and programs that will keep Filoli culturally relevant for the next 100 years.*

Weddings can be booked starting after 5pm daily.

**Ceremony Only: \$25,000** (90 minute rental)

**Reception Only: \$50,000** (4 hour rental)

**Ceremony and Reception Bundle: \$60,000** (6 hour rental)

- Ability to extend up to 8 hours for additional \$2,000 per hour

\*Price is guaranteed for 30 days from initial quote\*



## Ceremony Package Includes:

- 3 hours of set up & 1 hour of tear-down
- Complimentary 2-hour wedding portrait session on the day
- 1 Facility Manager and Gate Guard
- Complimentary parking for up to 370 cars
- Complimentary Premier Level Membership

## Reception & Bundle Packages Include:

- Up to 8 hours of set up & 4 hours of tear-down
- Complimentary 2-hour Wedding portrait session on the day
- 1 Facility Manager, 2 Visitor Services Personnel, and Gate Guard
- Complimentary parking for up to 370 cars
- Complimentary Heritage Level Membership

## Filoli Rental Requirements:

- Clients must hire a Filoli-approved wedding planner prior to contracting
- Clients must agree to Filoli's Property Use Guidelines
- One of our preferred caterers and exclusive tenting vendor, [Hensley Event Resources](#) must be used. All other vendors must be approved by the events manager in advance.





# Preferred Planners

*Due to the detailed nature of events at Filoli, we require a wedding planner for all weddings. Our recommended planners have proven success and have produced spectacular events for our clients.*

## Laurie Arons

Email: [events@lauriearons.com](mailto:events@lauriearons.com)  
Telephone 415.292.5032

## Morgan Doan

Email: [morgan@morganevents.com](mailto:morgan@morganevents.com)  
Telephone 415.728.2840

## Bash Please

Email: [sunna@bashplease.com](mailto:sunna@bashplease.com)  
Telephone 888.730.4913

## Michelle Rago Destinations

Email: [hello@michelleragodestinations.com](mailto:hello@michelleragodestinations.com)  
Telephone 212.877.7747

## Bustle Events

Email: [erin@bustleevents.com](mailto:erin@bustleevents.com)  
Telephone 707.771.9594







Construction of the home, 1916



The Bourn Family, 1919

## Filoli's History

Built more than sixty years after the California Gold Rush which inspired massive migration to Northern California, and ten years after the devastating 1906 earthquake and fires in San Francisco, Filoli (pronounced "Fie-low-lee") represented a desire to create a magnificent and enduring country estate. Its eclecticism reflects a Golden Age in California's history, free from the conventional rules of design, and exuding a pride in creativity and expression.

Filoli was built for Mr. and Mrs. William Bowers Bourn II, prominent San Franciscans at the turn of the twentieth century. Mr. Bourn arrived at the unusual name Filoli by combining the first two letters from the key words of his personal credo: "*Flight for a just cause; LOve your fellow man; LLive a good life.*"

Construction of Filoli began in 1915, and the Bourns moved into the House in 1917. Filoli's extensive formal garden was built between 1917 and 1929. Both Mr. and Mrs. Bourn died in 1936. In 1937, the estate was purchased by Mr. and Mrs. William P. Roth, owners of the San Francisco-based Matson Navigation Company. Under the Roths' supervision, the property was maintained, and the formal garden gained worldwide recognition. Mrs. Roth made Filoli her home until 1975, when she donated the House and formal garden to the National Trust for Historic Preservation, for the enjoyment and inspiration of future generations. The remaining acreage was later given to Filoli Center. For more than forty years, the two nonprofits have co-stewarded the historic estate.

